



ANKLE ARTHRODESIS - RECOMMENDED COMPONENTS

Component	Part Number	Quantity
Full Ring	(Size dependent)	2
Foot Plate	(Size dependent)	2
Foot Plate Extension	(Size dependent)	2
Half Ring	(Size dependent)	1
60mm Threaded Rod	55-11720	4
85mm Threaded Rod	55-10530	1
115mm Threaded Rod	55-10060	6
10mm Hex Head	50-1008	60
12mm Bolt	54-10.50	4
16mm Bolt	54-1010	2
Universal Wire Fixation Bolt	54-1152	20
Bayonet Wire	54-1216	3
Bayonet Wire with Stopper	54-1215	7
Wire Stopper (red)	54-1133	20
2 Hole Post	54-11610	1
40mm Plate	55-11671	1

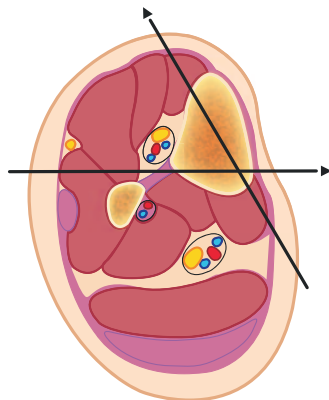
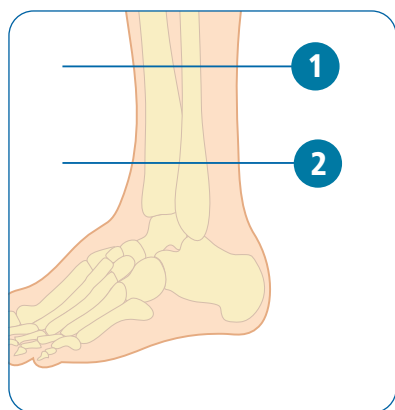
OPTIONAL COMPONENTS FOR ADDITIONAL STABILITY

Component	Part Number	Quantity
115mm Threaded Rod	55-10060	2
10mm Hex Head	50-1008	8
12mm Bolt	54-10.50	2
40mm Plate	54-11671	2
Double Row Foot Plate	(Size dependent)	1

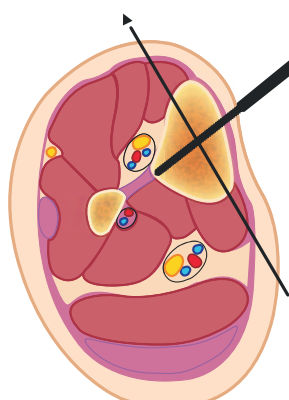
ADDITIONAL COMPONENTS (AS NEEDED)

Component	Part Number
Spacing Washer(s)	(Size dependent)
Post(s)	(Size dependent)
Quick Connect Half Pin, 5mm x 180mm	54-11240
Universal Half Pin Fixation Bolt, accepts 4mm-6mm	54-11530

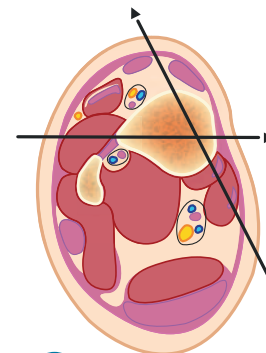
CROSS SECTION DIAGRAM FOR ANKLE ARTHRODESIS



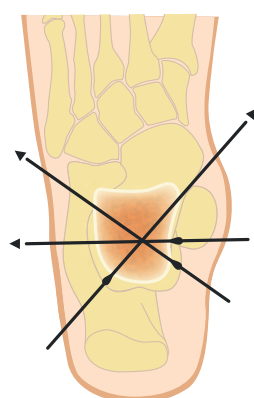
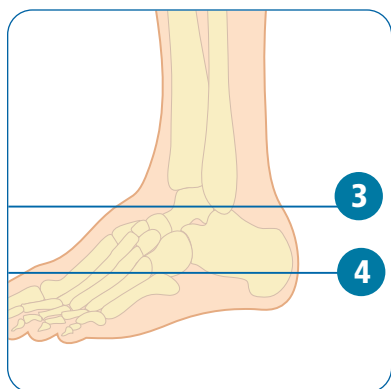
1A Option 1-Wire Construct



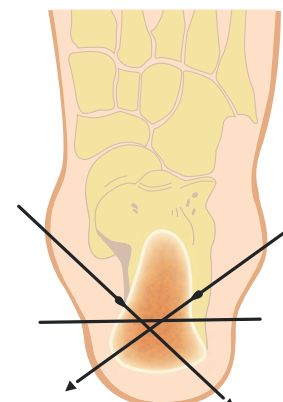
1B Option 2-Hybrid Construct



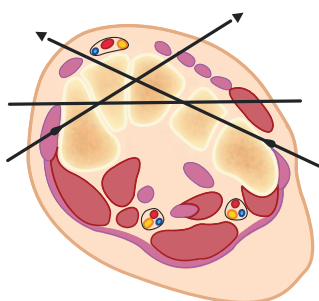
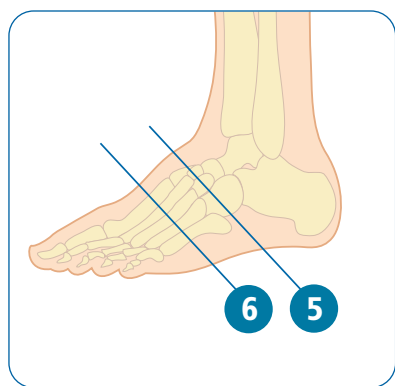
2



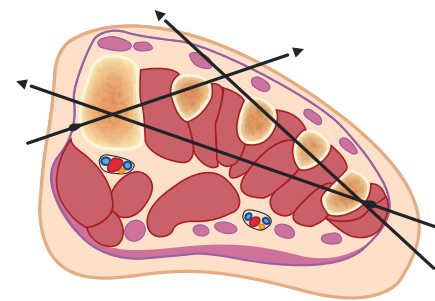
3 Dorsal View



4 Plantar View



5



6

Adult & Pediatric Deformity Correction | Foot & Ankle | Bone Growth Stimulation | Fixation | Biologics

Orthofix wishes to thank William Terrell, M.D., for his contribution to the development of this material.

1.800.266.3349 (BoneFix)
www.orthofix.com

TL-1110-PL-US © Orthofix Inc. 11/2011

